

Key points:

1. Defining Artificial Intelligence

Table of Contents



- [Key points:](#)
- [Defining Artificial Intelligence](#)
- [The challenges for teachers](#)
- [The challenges for EFL/ESL students](#)
- [How AI is changing the field of ELT](#)
- [What the future holds for AI in ELT](#)
- [Summary](#)

2. The challenges for teachers

3. The challenges for students

4. How AI is changing the field of ELT

5. What the future holds for AI in ELT

The field of Artificial Intelligence (AI) has seen a number of advances in recent years, and these advances are now starting to have an impact on the field of [English language teaching](#) and learning. While there are many potential benefits to using AI in this context, there are also a number of challenges that need to be considered. In this blog post, we will take a closer look at some of the key challenges associated with using AI in English [language teaching](#) and learning. Hopefully, by understanding these challenges, we can start to develop solutions that will help us maximize the potential benefits of AI in this context.



Defining Artificial Intelligence

Defining Artificial Intelligence (AI) can be a challenge in itself. AI is an ever-evolving concept and its meaning has changed over time to adapt to the technological landscape. It encompasses a field of study that focuses on teaching computers how to think and solve problems as humans do. AI technology relies heavily on machine learning, [natural language processing](#), and robotics in order to work autonomously. Its techniques are also used in fields beyond computer science such as mathematics, physics, economics, engineering, music composition, and gaming. AI is being increasingly utilized in industries throughout the world for more efficient tasks; however, there are still many challenges ahead when it comes to improving AI even further. Progress is being made every day but AI still has far to go before reaching its full potential.

The challenges for teachers

English language teachers today face a considerable challenge when it comes to teaching in an AI-driven environment. The increase in artificial intelligence technology can place overwhelming workloads on teachers, who are tasked with incorporating this technology into their curriculum while also providing meaningful instruction and guidance. This requires significant preparation and training that takes time away from the teacher's usual activities, such as creating lesson plans and grading student work. In addition, the use of AI technology provides challenges for those teachers who are less tech-savvy; they may not be comfortable utilizing these tools fully or may lack support in their schools or districts when it comes to guiding their use of technologies like AI-assisted materials and online assignment programs. Finally, there is also the challenge for English teachers to find ways in which AI can assist them without compromising their autonomy as educators. In short, embracing artificial intelligence technology presents several challenges for English language



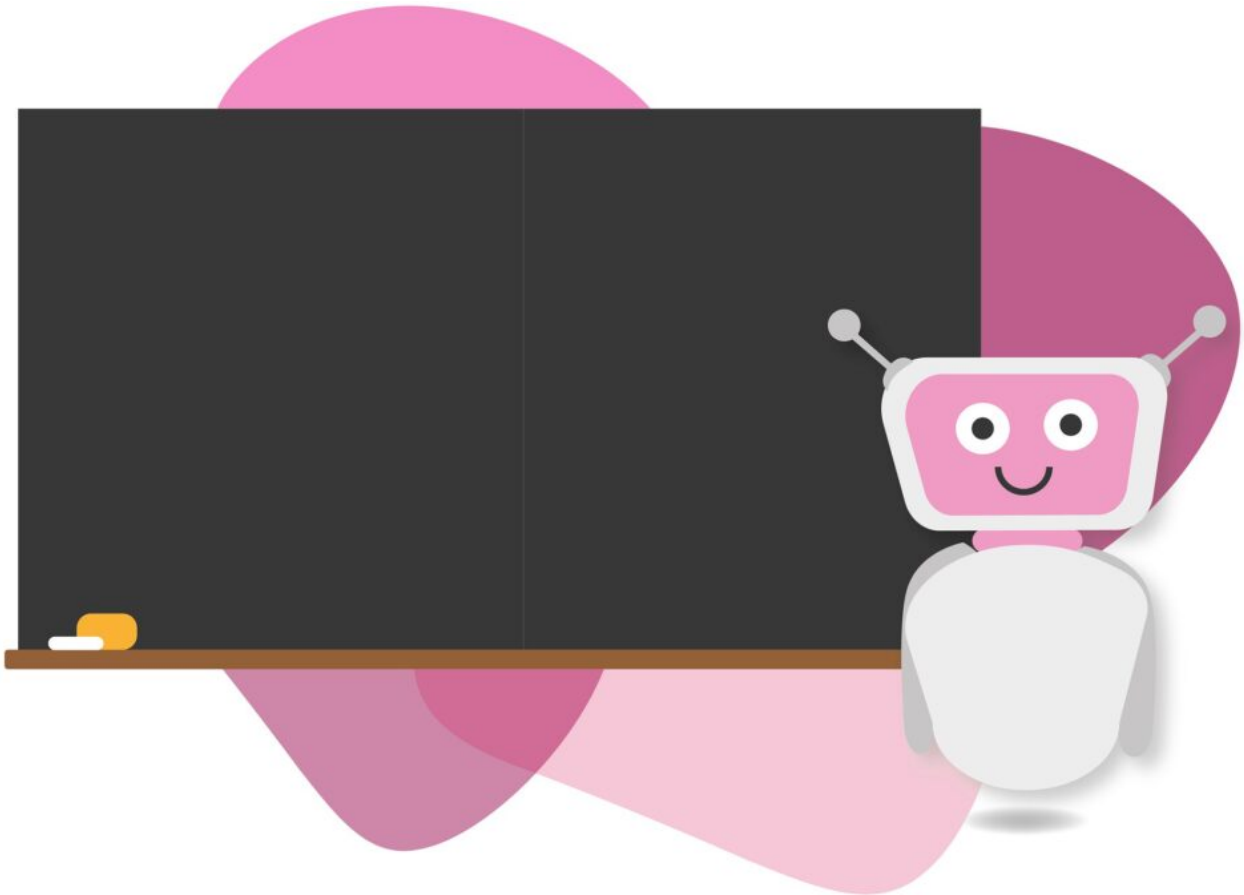
The challenges for EFL/ESL students

As the use of Artificial Intelligence in English language teaching and learning grows, there are challenges that EFL/ESL students face associated with increased reliance on AI technologies. Aspects such as well-developed teaching methodologies designed to maximize learning capability and meaningful motivation have been traditionally regarded within linguistic studies as essential for a successful language-learning experience. With AI's growing presence, challenges such as [teacher-student relationships](#), [communication](#), and discourse may arise due to a lack of human contact. Furthermore, language input from robots may not be very useful because systems lack the ability to modify output according to each student's individual needs and level. Consequently, it is important for educators and learners alike to recognize challenges such as these that come with the presence of AI in EFL/ESL instruction so they can be adequately addressed thus allowing for a more comprehensive educational experience.

How AI is changing the field of ELT

AI is rapidly changing the field of English language teaching (ELT), offering both opportunities and challenges. AI-based programs can be used to personalize instruction for each student based on their particular needs and challenges, adapt content faster than ever before, as well as provide

advanced analytics of how students are progressing. AI can even help with language assessments and tutoring. Although AI can make life easier for teachers by automating certain tasks, they will still need to understand the complexities of AI in order to get the best outcomes from these systems. For students, AI can facilitate [personalized learning](#) experiences, including targeted activities and [personalized feedback](#) loops which could help them progress in their studies faster than ever before. However, AI can also introduce distractions that are sometimes hard to control. Keeping track of all the tools available through AI is a challenge in itself that teachers should be prepared to address.



What the future holds for AI in ELT

As the world incorporates more and more technology into the traditional learning environment, the use of Artificial Intelligence (AI) in the field of English Language Teaching (ELT) is becoming a growing norm. AI-driven ELT has the potential to revolutionize the way we teach and learn languages by amplifying the value of personalized instruction, enabling us to better engage students in the learning process, and creating new opportunities to develop literacy and [language proficiency](#). The potential for AI in ELT also demonstrates exciting possibilities for the future that could benefit both teachers and students alike. However, the intrinsic challenges of trusting an algorithm's outputs require teachers to remain open-minded but also informed about the advantages and disadvantages so they may ultimately determine whether using AI is right for their educational needs. Despite these challenges, AI has the potential to provide actionable insights into teaching

approaches and materials development that could lead to improved educational practices.

Summary

The integration of AI into the EFL/ESL classroom has immense potential, especially with regard to [language assessment](#), [pronunciation](#) analysis, and customized development plans. Yet, there is still a range of ethical concerns to consider when using AI tools in language teaching and learning. As we can see, Artificial Intelligence presents both teachers and students with unique challenges yet it is inevitably set to revolutionize English language teaching within the coming years. Therefore, this brings us to the question: Should we use AI in the EFL/ESL classroom or not? Whilst there is no one definitive answer to this question as educators must consider their own school's individual needs based on contexts and available technology, what we can say for certain is that Artificial Intelligence represents an exciting wave of both opportunities and complexities in ELT. Ultimately it will be up to each teacher, school, or educational organization to decide whether they believe that its pros outweigh its cons and if AI is the right tool for their classroom environment.

Cite this article

APA: EFL Cafe. (2023, February 27). Artificial Intelligence in English Language Teaching and Learning: Challenges. EFLCafe.net.

<https://eflcafe.net/artificial-intelligence-in-english-language-teaching-and-learning-challenges/>

In-text citation: (EFL Cafe, 2025)

MLA: EFL Cafe "Artificial Intelligence in English Language Teaching and Learning: Challenges." EFLCafe.net, 27 Feb. 2023,

<https://eflcafe.net/artificial-intelligence-in-english-language-teaching-and-learning-challenges/>.

In-text citation: (EFL Cafe)